

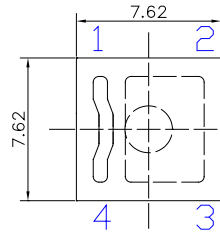
■Features

- High Luminous Super Flux Output
- Arc Standard Directivity
- UV Resistant Epoxy
- Water Clear Type

■Applications

- Traffic signal
- Backlighting
- Signal and channel letter
- Other lighting

■Outline Dimension



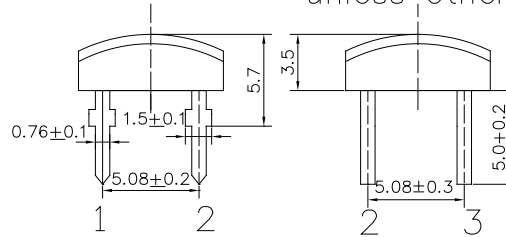
1,4 → → 2,3 W/M/B/PG

1,4 → → 2,3 Y/O/R

Unit: mm

Tolerance: $\pm 0.20\text{mm}$

unless otherwise noted

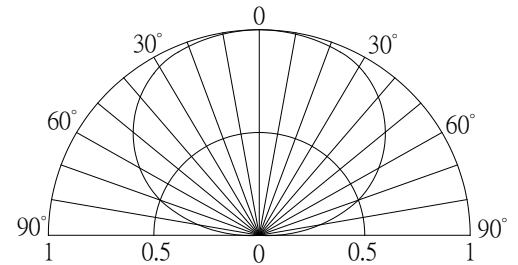


■Absolute Maximum Rating

($T_a=25^\circ\text{C}$)

Item	Symbol	Value		Unit
		W/M/B/PG	Y/O/R	
DC Forward Current	I_F	80	80	mA
Pulse Forward Current#	I_{FP}	120	120	mA
Reverse Voltage	V_R	5	5	V
Power Dissipation	P_D	288	224	mW
Operating Temperature	T_{opr}	-30 ~ +85		$^\circ\text{C}$
Storage Temperature	T_{stg}	-40 ~ +100		$^\circ\text{C}$
Lead Soldering Temperature	T_{sol}	260 $^\circ\text{C}$ /5sec		-

■Directivity



#Pulse width Max.10ms Duty ratio max 1/10

■Electrical -Optical Characteristics

($T_a=25^\circ\text{C}$)

Part Number	Color			V_F (V)			I_R (μA)	Φ_V (LM)			I_v (mcd)			W_d (nm)/CCT(K)			$2\theta 1/2$ (deg)
				Min.	Typ.	Max.	Max.	Min.	Typ.	Max.	Min.	Typ.	Max.	Min.	Typ.	Max.	Typ.
				$I_F=75\text{mA}$			$V_R=5\text{V}$			$I_F=75\text{mA}$							
OSW47LZ4E1P	Pure White	W		-	3.2	3.6	10	18	20	-	7000	8400	-	5500-8500K(X:0.31,Y:0.34)			140
OSM57LZ4E1P	Warm White	M		-	3.2	3.6	10	17	19	-	5800	7000	-	2700-3200K(X:0.44,Y:0.41)			140
OSB56LZ4E1P	Blue	B		-	3.3	3.6	10	4	5	-	1500	2000	-	465	470	475	140
OSG59LZ4E1P	Pure Green	PG		-	3.3	3.6	10	18	20	-	7000	8400	-	520	525	530	140
OS5YKAZ4E1P	Yellow	Y		-	2.4	2.8	10	8	10	-	3000	4000	-	585	590	595	140
OS5OKAZ4E1P	Orange	O		-	2.4	2.8	10	8	10	-	3000	4000	-	600	605	610	140
OS5RKAZ4E1P	Red	R		-	2.4	2.8	10	8	10	-	3000	4000	-	620	625	630	140

*1 Tolerance of measurements of chromaticity coordinate is $\pm 10\%$

*2 Tolerance of measurements of color temperature is $\pm 10\%$

*3 Tolerance of measurements of dominant wavelength is $\pm 1\text{nm}$

*4 Tolerance of measurements of luminous flux is $\pm 15\%$

*5 Tolerance of measurements of forward voltage is $\pm 0.1\text{V}$