

■Features

- High Luminous Super Flux Output
- 3φ Standard Directivity
- UV Resistant Epoxy
- Water Clear Type

■Applications

- Traffic signal
- Backlighting
- Signal and channel letter
- Other lighting

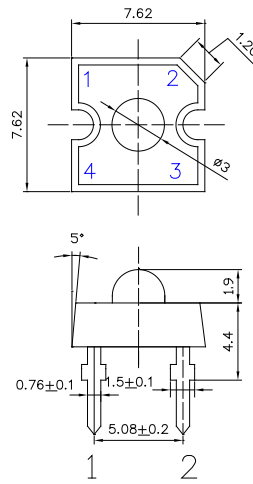
■Absolute Maximum Rating

(Ta=25°C)

Item	Symbol	Value		Unit
		W/M/B/PG	Y/O/R	
DC Forward Current	I _F	80	80	mA
Pulse Forward Current#	I _{FP}	120	120	mA
Reverse Voltage	V _R	5	5	V
Power Dissipation	P _D	288	224	mW
Operating Temperature	Topr	-30 ~ +85		°C
Storage Temperature	Tstg	-40 ~ +100		°C
Lead Soldering Temperature	Tsol	260°C/5sec		-

#Pulse width Max.10ms Duty ratio max 1/10

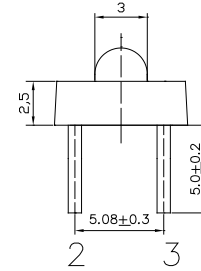
■Outline Dimension



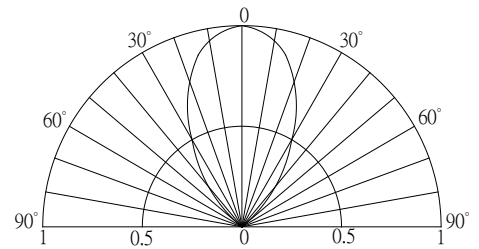
1,4 → 2,3 W/M/B/PG

1,4 ← 2,3 Y/O/R

Unit: mm
Tolerance: ±0.20mm
unless otherwise noted



■Directivity



■Electrical -Optical Characteristics

(Ta=25°C)

Part Number	Color			V _F (V)			I _R (μA)	Φ _V (LM)			I _v (mcd)			Wd(nm)/CCT(K)			2θ1/2(deg)
				Min.	Typ.	Max.	Max.	Min.	Typ.	Max.	Min.	Typ.	Max.	Min.	Typ.	Max.	Typ.
				I _F =75mA			V _R =5V			I _F =75mA							
OSW47LZ161P	Pure White	W		-	3.2	3.6	10	18	20	-	25000	30000	-	5500-8500K(X:0.31,Y:0.34)			60
OSM57LZ161P	Warm White	M	■	-	3.2	3.6	10	17	19	-	22000	25000	-	2700-3200K(X:0.44,Y:0.41)			60
OSB56LZ161P	Blue	B	■	-	3.3	3.6	10	4	5	-	4500	5800	-	465	470	475	60
OSG59LZ161P	Pure Green	PG	■	-	3.3	3.6	10	18	20	-	25000	30000	-	520	525	530	60
OS5YKAZ161P	Yellow	Y	■	-	2.4	2.8	10	8	10	-	12000	14400	-	585	590	595	60
OS5OKAZ161P	Orange	O	■	-	2.4	2.8	10	8	10	-	12000	14400	-	600	605	610	60
OS5RKAZ161P	Red	R	■	-	2.4	2.8	10	8	10	-	12000	14400	-	620	625	630	60

*1 Tolerance of measurements of chromaticity coordinate is ±10%

*2 Tolerance of measurements of color temperature is ±10%

*3 Tolerance of measurements of dominant wavelength is ±1nm

*4 Tolerance of measurements of luminous flux is ±15%

*5 Tolerance of measurements of forward voltage is ±0.1V