

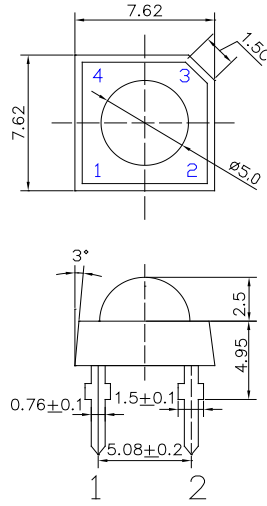
■ Features

- High Lumen Output
- 5φ Dome Standard Directivity
- Long Lifetime Operation
- Water Clear Type
- High Voltage Operation

■ Applications

- Electronic Signs and Signals
- Illuminations
- Reading Lamps / Emergency Lighting
- Other Lighting

■ Outline Dimension



Unit: mm
Tolerance: $\pm 0.20\text{mm}$
unless otherwise noted
1,4 Anode
2,3 Cathode

■ Absolute Maximum Rating

($T_a=25^\circ\text{C}$)

Item	Symbol	Value	Unit
DC Forward Current	I_F	35	mA
Pulse Forward Current#	I_{FP}	120	mA
Reverse Voltage	V_R	20	V
Power Dissipation	P_D	420	mW
Operating Temperature	T_{opr}	-30 ~ +85	$^\circ\text{C}$
Storage Temperature	T_{stg}	-40 ~ +100	$^\circ\text{C}$
Lead Soldering Temperature	T_{sol}	260 $^\circ\text{C}$ /5sec	-

#Pulse width Max 10ms , Duty ratio max 1/10

■ Electrical -Optical Characteristics

($T_a=25^\circ\text{C}$)

Part Number	Color			V_F (V)*1			I_R (μA)	Φ_v (LM)*2			CCT(K)*3/x,y*4			2 θ 1/2(deg)
				Min.	Typ.	Max.	Max.	Min.	Typ.	Max.	Min.	Typ.	Max.	Typ.
				$I_F=30\text{mA}$			$V_R=20\text{V}$	$I_F=30\text{mA}$						
OSW5CVZ2C1P	Cool White	W	-	11.5	12.0	10	60	65	-	8500-10000-18000K(X:0.27,Y:0.28)			120	
OSW4CVZ2C1P	Pure White	W	-	11.5	12.0	10	65	70	-	5500-6500-8500K(X:0.31,Y:0.34)			120	
OSM5CVZ2C1P	Warm White	M	■	11.5	12.0	10	60	65	-	2700-3000-3300K(X:0.44,Y:0.41)			120	
OSB6CVZ2C1P	Ice Blue	B	■	11.5	12.0	10	65	70	-	X:0.19,Y:0.29			120	

*1 Tolerance of measurements of forward voltage is $\pm 0.1\text{V}$

*2 Tolerance of measurements of luminous flux is $\pm 15\%$

*3 Tolerance of measurements of color temperature is $\pm 10\%$

*4 Tolerance of measurements of chromaticity coordinate is $\pm 10\%$

■ Directivity

