

1.8 Inch Single Digit Display
OSL11801-IX (Common Anode type)
OSL11801-LX(Common Cathode type)

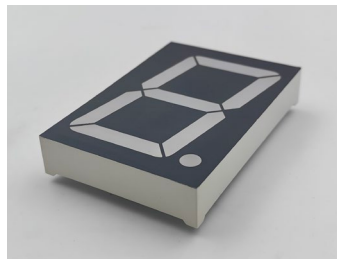
■ **Features**

- 1.8 Inch Single Digit Display
- Long lifetime operation
- IC compatible
- Low power dissipation
- Black surface & white segment or dot

■ **Applications**

- Counting device
- Clock

■ **Photo**










■ **Absolute Maximum Rating** (Ta=25°C)

Item	Symbol	Value		Unit
		W/B/PG	YG/Y/O/R/RA	
DC Forward Current	I _F	20	20	mA
Pulse Forward Current#	I _{FP}	100	100	mA
Reverse Voltage / Per Segment or (Dp)	V _R	15(5)	15(5)	V
Power Dissipation / Per Segment or (Dp)	P _t	216(72)	156(52)	mW
Operating Temperature	Topr	-30 ~ +70		°C
Storage Temperature	Tstg	-40 ~ +85		°C
Lead Soldering Temperature(1.6mm from seating plane)	Tsol	260°C/5sec		°C

#Pulse width Max.10ms Duty ratio max 1/10

■ **Electrical -Optical Characteristics** (Ta=25°C)

Part Number	Color		V _F (V)			I _R (μA)	I _v (mcd)			λD(nm)		
			Per Segment or (Dp)				Max.	Min.	Typ.	Max.	Min.	Typ.
			Min.	Typ.	Max.	I _F =20mA						
OSL11801-IW/LW	White	W		9.3(3.1)	10.8(3.6)	20	-	80	-	X:0.27 , Y:0.28 (CCT:8000-18000K)		
OSL11801-IB/LB	Blue	B		9.3(3.1)	10.8(3.6)	20	-	50	-	460	465	475
OSL11801-IG/LG	Pure Green	G		9.3(3.1)	10.8(3.6)	20	-	270	-	515	525	530
OSL11801-IYG/LYG	Yellow Green	YG		6.6(2.2)	7.8(2.6)	20	-	30	-	565	570	575
OSL11801-IY/LY	Yellow	Y		6.3(2.1)	7.8(2.6)	20	-	70	-	585	590	595
OSL11801-IO/LO	Orange	O		6.3(2.1)	7.8(2.6)	20	-	70	-	600	605	610
OSL11801-IR/LR	Red	R		6.3(2.1)	7.8(2.6)	20	-	40	-	625	630	640
OSL11801-IRA/LRA	High Red	RA		6.3(2.1)	7.8(2.6)	20	-	100	-	620	625	630

*1 Tolerance of measurements of dominant wavelength is ±1nm

*2 Tolerance of measurements of luminous intensity is ±15%

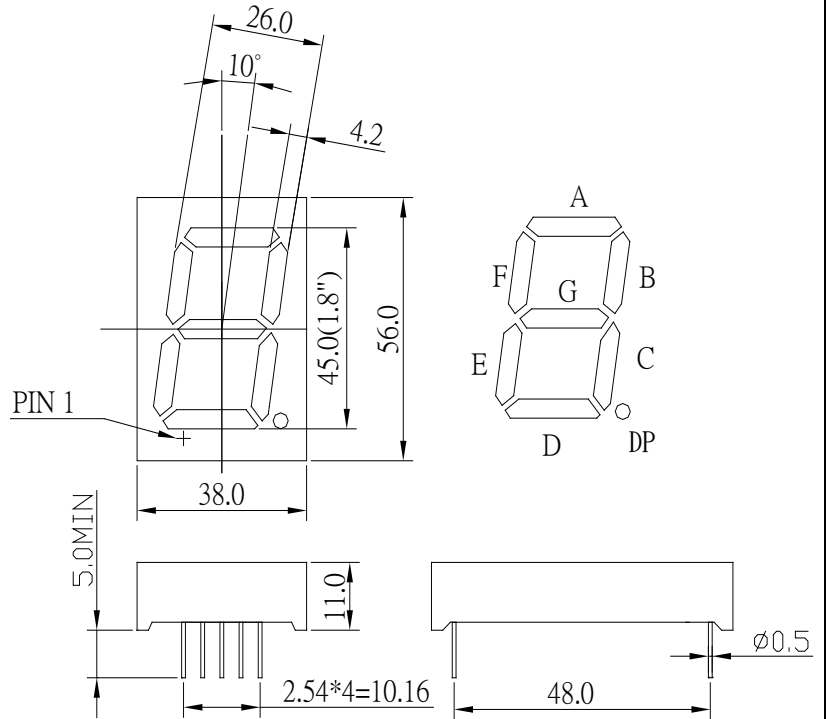
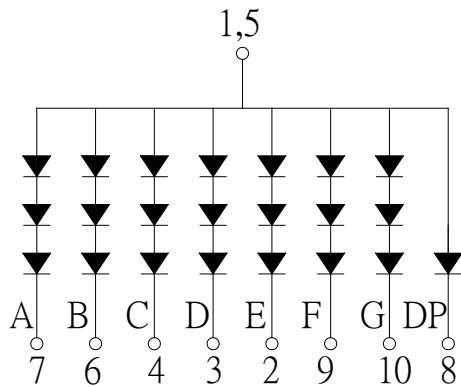
*3 Tolerance of measurements of forward voltage is ±0.1V

1.8 Inch Single Digit Display
OSL11801-IX (Common Anode type)
OSL11801-LX (Common Cathode type)

■ Package Dimensions and Pin Function

**OSL11801-IX
(Common Anode type)**

Note:
Unit : mm(Tolerance:±0.25mm unless
otherwise noted)



**OSL11801-LX
(Common Cathode type)**

Note:
Unit : mm(Tolerance:±0.25mm unless
otherwise noted)

