

## E5 AC/DC Screw LED Lamp

E5 AC/DC Screw LED Lamp is 2pcs of LED paralleled together in opposite direction and requires a resistor in series to permit direct connection to AC/DC 3V.

### ■ Features

- High Luminous LED
- 4.8mm Straw 100° LED
- AC/DC 3V
- Color Transparent (W/M: Water Clear)

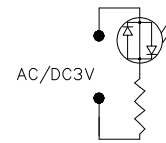
### ■ Applications

- Bicycle Light / Torch
- Dashboard Signal / Automotive Lighting

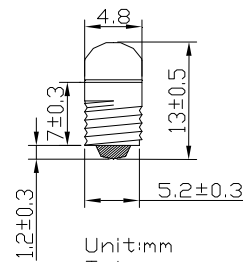
### Photo



### Circuit Diagram



### Outline Dimension



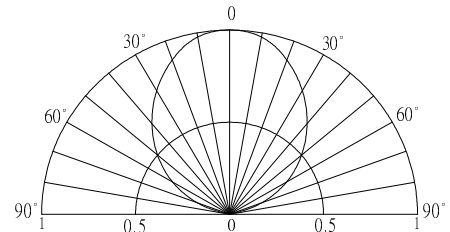
Unit:mm  
Tolerances:±0.30mm  
unless otherwise noted

### ■ Absolute Maximum Rating

(Ta=25°C)

Item	Symbol	Value	Unit
AC/DC Forward Voltage	V <sub>F</sub>	3.2	V
Power Dissipation	P <sub>D</sub>	0.1	W
Operating Temperature	T <sub>opr</sub>	-30 ~ +85	°C
Storage Temperature	T <sub>stg</sub>	-40~ +100	°C
Lead Soldering Temperature	T <sub>sol</sub>	260°C/5sec	-

### ■ Directivity



### ■ Electrical -Optical Characteristics

(Ta=25°C)

Part Number	Color	Lens Type	Control Voltage AC/DC (V)			Wd(nm)/CCT(K)*			Luminous Intensity* (mcd)		
			Min.	Typ.	Max.	Working Current: IF=20mA			Min.	Typ.	Max.
						Min.	Typ.	Max.			
OSE5-W5D25PA1B-3V	Cool White	Water Clear	-	3	3.2	CCT:8500-18000K			1120	1560	-
OSE5-W4D25PA1B-3V	Pure White	Water Clear				CCT:5500-8500K			1120	1560	-
OSE5-M5D25PA1B-3V	Warm White	Water Clear				CCT:2700-3200K			1120	1560	-
OSE5-BBS25PA3B-3V	Blue	Blue Transparent				465	470	475	500	750	-
OSE5-PPD25PA3B-3V	Green	Green Transparent				520	525	530	1120	1560	-
OSE5-YYP25PA3B-3V	Yellow	Yellow Transparent				585	590	595	750	1120	-
OSE5-OOP25PA3B-3V	Orange	Orange Transparent				600	605	610	750	1120	-
OSE5-RRP25PA3B-3V	Red	Red Transparent				620	625	630	750	1120	-

\*1 Tolerance of measurements of chromaticity coordinate is ±10%

\*2 Tolerance of measurements of dominant wavelength is ±1nm

\*3 Tolerance of measurements of luminous intensity is ±15%

\*4 Tolerance of measurements of forward voltage is ±0.1V