

■ **Features**

- 0.39 Inch 16-Segment Single Digit Display
- Long lifetime operation
- IC compatible
- Low power dissipation
- Black surface & white segment or dot
- Number of pins:18

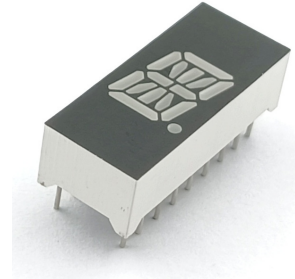
■ **Applications**

- Counting device
- Clock

■ **Absolute Maximum Rating** (Ta=25°C)








Item	Symbol	Value		Unit
		YG/Y/O/R/RA	W/B/G	
DC Forward Current	I _F	20	20	mA
Pulse Forward Current#	I _{FP}	100	100	mA
Reverse Voltage	V _R	5	5	V
Power Dissipation	P _t	50	72	mW
Operating Temperature	Topr	-30 ~ +70		°C
Storage Temperature	Tstg	-40~ +85		°C
Lead Soldering Temperature(1.6mm from seating plane)	Tsol	260°C/5sec		°C

■ **Photo**



#Pulse width Max.10ms Duty ratio max 1/10

■ **Electrical -Optical Characteristics** (Ta=25°C)

Part Number	Color			V _F (V)* ₁			I _R (μA)	I _v (mcd)* ₂			λD(nm)* ₃ Chromaticity Coordinates* ₄		
				Min.	Typ.	Max.	Max.	Min.	Typ.	Max.	Min.	Typ.	Max.
				I _F =20mA			V _R =5V			I _F =20mA			
OSL10395-IW(LW)	White	W		-	3.3	3.6	20	-	100	-	X=0.27,Y=0.28 (CCT:8000-18000K)		
OSL10395-IB(LB)	Blue	B		-	3.3	3.6	20	-	50	-	460	470	475
OSL10395-IG(LG)	Pure Green	G		-	3.3	3.6	20	-	200	-	515	525	530
OSL10395-IYG(LYG)	Yellow Green	YG		-	2.2	2.6	20	-	12	-	565	570	575
OSL10395-IY(LY)	Yellow	Y		-	2.1	2.5	20	-	40	-	585	590	595
OSL10395-IO(LO)	Orange	O		-	2.1	2.5	20	-	40	-	600	605	610
OSL10395-IR(LR)	Red	R		-	2.1	2.5	20	-	20	-	620	630	640
OSL10395-IRA(LRA)	Red	R		-	2.1	2.5	20	-	100	-	620	625	630

*₁ Tolerance of measurements of forward voltage is ±0.1V *₂ Tolerance of measurements of luminous intensity is ±15%

*₃ Tolerance of measurements of dominant wavelength is ±1nm *₄ Tolerance of measurements of chromaticity coordinate is ±10%

