

## Premium Power T10 LED Lamp

Premium Power T10 Lamp LED which requires a 3-chip 8mm LED and a resistor in series to permit direct connection to DC 12V.

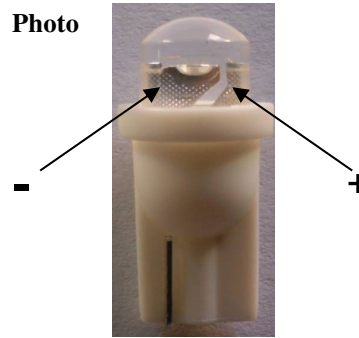
### ■ Features

- 8mm chip LED
- Water Clear
- DC 12V

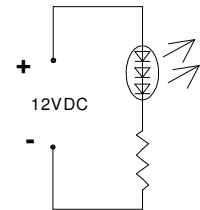
### ■ Applications

- Bicycle Light / Torch
- Lighting / Signal

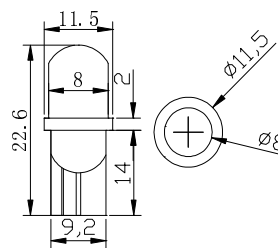
Photo



Circuit Diagram



Outline Dimension



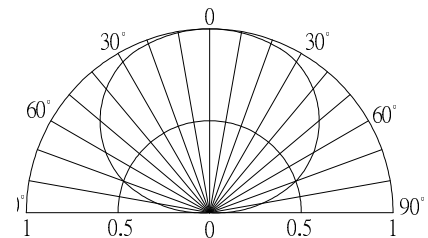
Unit:mm

Tolerance:±0.30mm

### ■ Absolute Maximum Rating

(Ta=25°C)

Item	Symbol	Value	Unit
DC Forward Voltage	V <sub>F</sub>	14	V
Power Dissipation	P <sub>D</sub>	0.7	W
Operating Temperature	T <sub>opr</sub>	-10 ~ +40	°C
Storage Temperature	T <sub>stg</sub>	-20~ +80	°C



### ■ Electrical -Optical Characteristics

(Ta=25°C)

Part Number	Color	Control Voltage	Domi.	Luminous Intensity*
		DC (V)	Wavelength*	
		Working Current: IF=40mA		
		Typ.	Typ.	Typ.
OST10WG01GD-4WM387E1U	Pure White	12	5500-8000K	55lm
OST10WG01GD-5WM387E1U	Cool White	12	8000-17000K	50lm
OST10WG01GD-5MM387E1U	Warm White	12	2500-3500K	50lm
OST10WG01GD-5YE387E1U	Yellow	12	585-595nm	20 lm
OST10WG01GD-5RE387E1U	Red	12	620-630nm	20 lm
OST10WG01GD-4BM387E1U	Blue	12	455-465nm	12 lm
OST10WG01GD-G58387E1U	Pure Green	12	520-530nm	35 lm
OST10WG01GD-5OG387E1U	Orange	12	600-610nm	35 lm

\*1 Tolerance of measurements of chromaticity coordinate is +10%

\*2 Tolerance of measurements of luminous intensity is +15%

\*3 Tolerance of measurements of forward voltage is ±0.1V

\*4 Tolerance of measurements of dominant wavelength is +1nm