

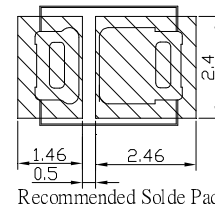
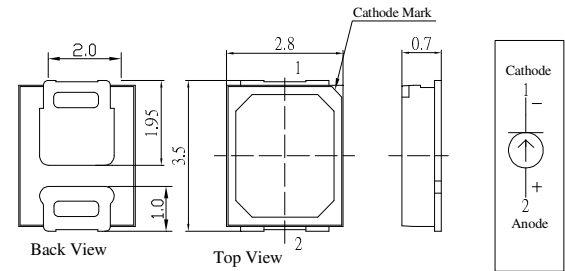
CURRENT REGULATIVE DIODE (CRD)

■ Outline Dimension

- CRD is a diode which supplies constant current to an electric circuit, when power supply voltage fluctuations or load impedance fluctuations occur.
- CRD is used for current stabilization and current limiting.
- SMD Packing (LxWxT) of 2.8mm×3.5mm×0.7mm

■ Features

- Robust Power Package:460mW
- Wide Operating Voltage Range
- Immediate Turn-On
- Voltage Surge Suppressing – Protecting LEDs



Unit:mm
Tolerance:±0.20mm
unless otherwise noted

■ Absolute Maximum Rating (Ta=25°C)

Item	Symbol	Value	Unit
Input Voltage	V _F	24	V
Junction Temperature	T _j	125	°C
Storage Temperature	T _{stg}	-40~ +125	°C
Collector Dissipation	P _c	0.75	W

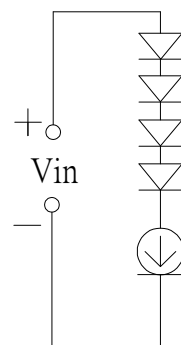
■ Electrical -Optical Characteristics (Ta=25°C)

Part Number	Constant Current(I _H)		Turn-on Voltage(V _k)		Limiting Ratio (K _c)	Withstand Voltage (V)
	I _H (mA)	Voltage(v)	V _k (V)	I _k (MA)	I _{30V} /I _{10V}	
OSCRD2835-18	16-19	10	≤3.5	≤0.8I _H	≤1.1	>70

■ Application

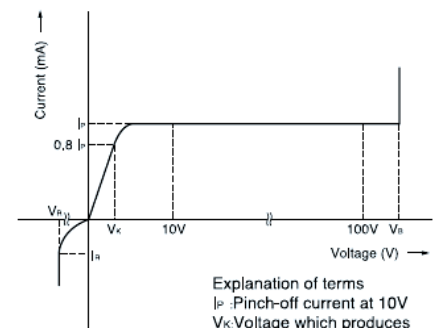
- Automobile: Chevron Side Mirror Markers, Cluster, Display & Instrument Backlighting, CHMSL, Map Light
- DC Lighting Panels, Display Signage, Decorative Lighting, Channel Lettering
- Switch Contact Wetting

■ Application Information



Single Current

■ Basic characteristics



Explanation of terms
I_p :Pinch-off current at 10V
V_k:Voltage which produces 0.8I_p or greater current
V_B:Breakdown voltage
I_R :Permitted reverse current