

E5 AC/DC Screw LED Lamp

E5 AC/DC Screw LED Lamp is 2pcs of LED paralleled together in opposite direction and requires a resistor in series to permit direct connection to AC/DC 4.5V.

■ Features

- High Luminous LEDs
- 4.8mm LED
- AC/DC 4.5V

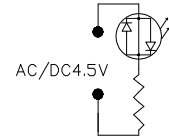
■ Applications

- Bicycle Light / Torch
- Dashboard Signal / Automotive Lighting

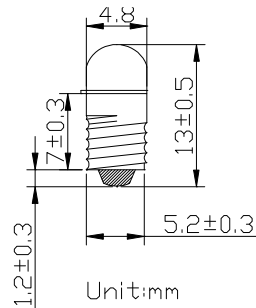
Photo



Circuit Diagram



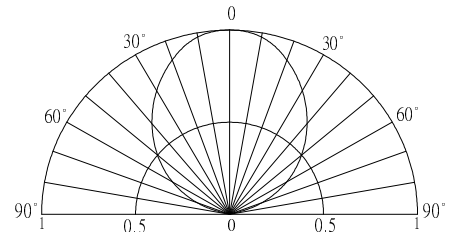
Outline Dimension



■ Absolute Maximum Rating (Ta=25°C)

Item	Symbol	Value	Unit
AC/DC Forward Voltage	V _F	5.5	V
Power Dissipation	P _D	0.17	W
Operating Temperature	T _{opr}	-30 ~ +85	°C
Storage Temperature	T _{stg}	-40 ~ +100	°C
Lead Soldering Temperature	T _{sol}	260°C/5sec	-

■ Directivity



■ Electrical -Optical Characteristics (Ta=25°C)

Part Number	Color	Lens Type	Control Voltage AC/DC (V)			Wd(nm)/CCT(K)*			Luminous Intensity* (mcd)		
			Min.	Typ.	Max.	Working Current: IF=20mA			Min.	Typ.	Max.
						Min.	Typ.	Max.			
OSE5-W4425PA1B-4.5V	White	Water Clear	4.5	5.5	5.5	CCT:5500-8500K			2180	3000	-
OSE5-M3425PA1B-4.5V	Warm White	Water Clear				CT:2000-2200-2400K			1560	2180	-
OSE5-BBS25PA3B-4.5V	Blue	Blue Transparent				465	470	475	1120	1560	-
OSE5-PPG25PA3B-4.5V	Green	Green Transparent				520	525	530	2180	3000	-
OSE5-YYM25PA3B-4.5V	Yellow	Yellow Transparent				585	590	595	1560	2180	-
OSE5-RRM25PA3B-4.5V	Red	Red Transparent				620	625	630	1560	2180	-

*1 Tolerance of measurements of luminous intensity is +15%

*2 Tolerance of measurements of forward voltage is ±0.1V

*3 Tolerance of measurements of dominant wavelength is ±1nm