

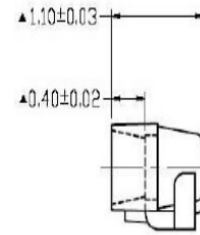
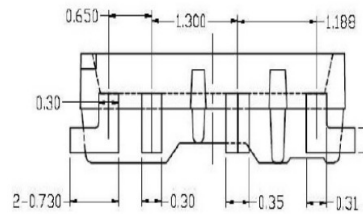
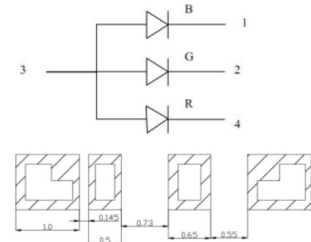
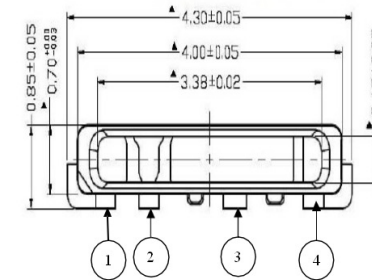
■Features

- High Luminous PLCC4 Top SMD LEDs
- 4.3x1.1x0.85mm Standard Directivity
- UV Resistant Silicone
- Water Clear Type

■Applications

- Full Color Screens
- Toys
- Games
- Decorative Lighting

■Outline Dimension



3.Common Anode
1.Blue
2.Pure Green
4.Red
Unit:mm
Tolerance:± 0.20mm
unless otherwise noted

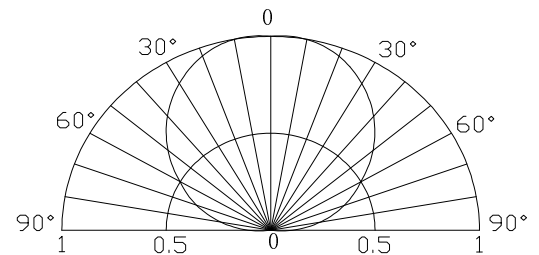
■Absolute Maximum Rating

(Ta=25°C)

Item	Symbol	Value		Unit
		Red	G/B	
DC Forward Current	I _F	30	30	mA
Pulse Forward Current*	I _{FP}	100	100	mA
Reverse Voltage	V _R	5	5	V
Power Dissipation	P _D	78	102	mW
Operating Temperature	Topr	-30 ~ +85		°C
Storage Temperature	Tstg	-40~ +100		°C
Lead Soldering Temperature	Tsol	260°C/10sec		-

*Pulse width Max.10ms Duty ratio max 1/10

■Directivity



■Electrical -Optical Characteristics

(Ta=25°C)

Item	Symbol	Condition	Min.	Typ.	Max.	Unit
DC Forward Voltage	V _F (Red)	I _F =20mA	-	2.1	2.6	V
	V _F (G/B)	I _F =20mA	-	3.1	3.4	V
Reverse Current	I _R	V _R =5V	-	-	10	μA
Domi. Wavelength*	λ _D (Red)	I _F =20mA	620	625	630	nm
	λ _D (Green)	I _F =20mA	515	520	525	nm
	λ _D (Blue)	I _F =20mA	465	470	475	nm
Luminous Intensity*	I _v (Red)	I _F =20mA	750	1120	-	mcd
	I _v (Green)	I _F =20mA	1120	1560	-	mcd
	I _v (Blue)	I _F =20mA	330	500	-	mcd
50% Power Angle	2θ _{1/2}	I _F =20mA	-	120	-	deg

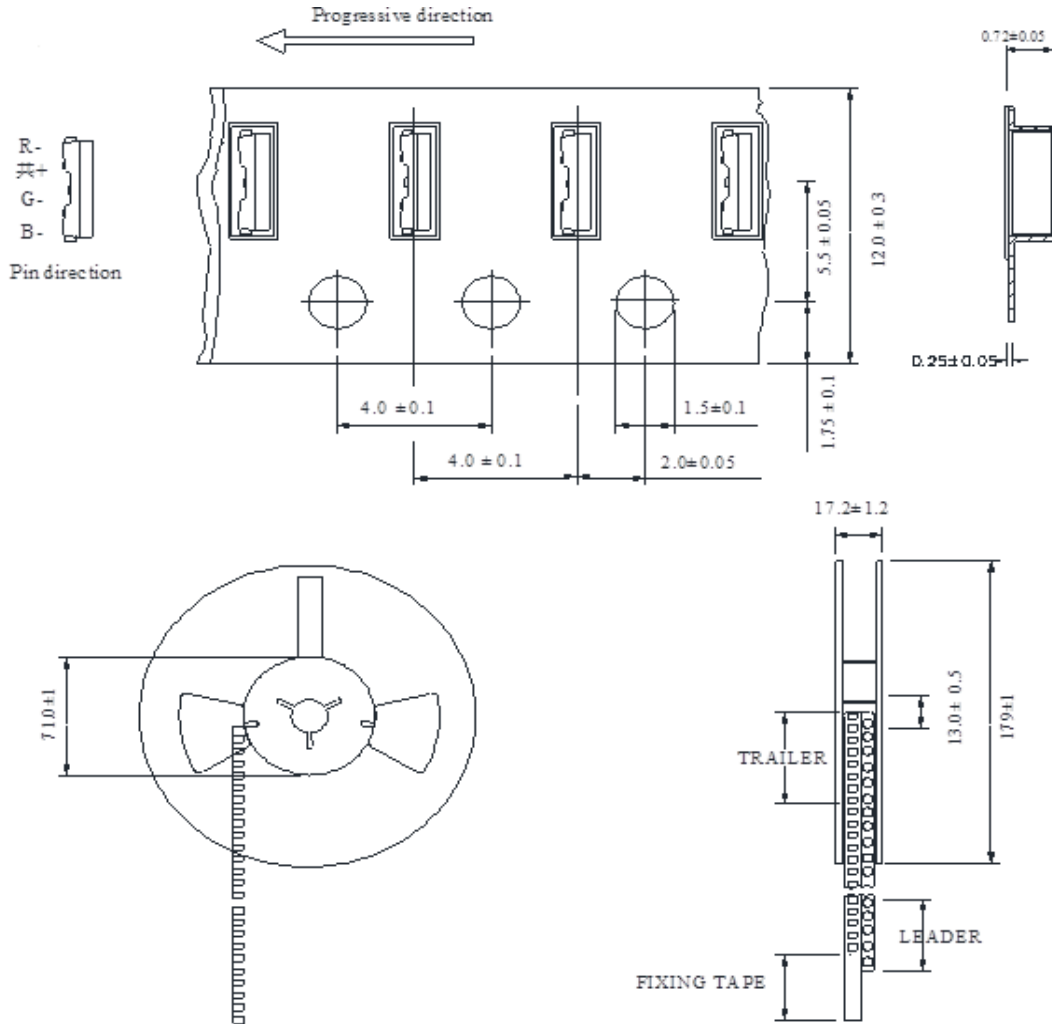
*1 Tolerance of measurements of dominant wavelength is ±1nm

*2 Tolerance of measurements of luminous intensity is ±15%

*3 Tolerance of measurements of forward voltage is ±0.1V

PACKING

PACKING DIMENSIONS



Notes:

1. Unit: mm
2. 4000pcs/Reel