

CURRENT REGULATIVE LED

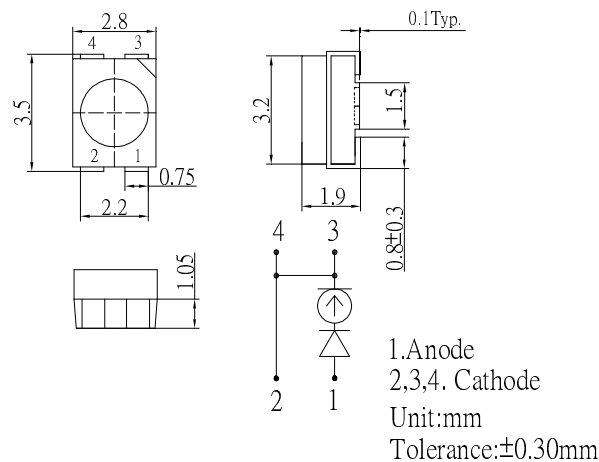
CRLED

- CRLED is LED which supplies constant current to keep LED Intensity Consistency even when power supply voltage fluctuations or load impedance fluctuations occur.
- CRLED is used with current stabilization and current limiting

■Features

- High Luminous PLCC4 Power Top SMD LEDs
- 3.5x2.8x1.9mm Standard Directivity
- Superior Weather-resistance / UV Resistant Silicone

■Outline Dimension

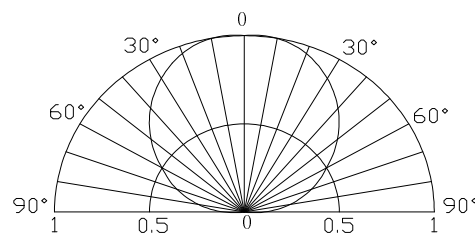


■Absolute Maximum Rating

(Ta=25°C)

Item	Symbol	Value	Unit
DC Forward Voltage	V _F	20	V
Power Dissipation	P _D	350	mW
Operating Temperature	Topr	-30 ~ +85	°C
Storage Temperature	Tstg	-40 ~ +100	°C
Lead Soldering Temperature	Tsol	260°C/5sec	-

■Directivity



■Electrical -Optical Characteristics

(Ta=25°C)

Part Number	Color	V _F (V)		I _F (mA)			I _R (μA)	I _v (mcd)*			λD(nm)*			2θ1/2(deg)
		Min	Max	Min	Typ.	Max.	Max..	Min.	Typ.	Max.	Min.	Typ.	Max.	Typ.
				V _F =12V			V _R =8V	V _F =12V			V _F =12V			
OSW54LS3C1A-CRLED16	Cool White	5.5	20	-	16	-	10	-	1400	-	X=0.27, Y=0.28			30
OSW44LS3C1A-CRLED16	Nature White	5.5	20	-	16	-	10	-	1400	-	X=0.31, Y=0.34			30
OSM54LS3C1A-CRLED16	Warm White	5.5	20	-	16	-	10	-	1400	-	X=0.45, Y=0.41			30
OSB64LS3C1A-CRLED16	Ice Blue	5.5	20	-	16	-	10	-	1300	-	X=0.19, Y=0.29			30
OSB5SAS3C1A-CRLED16	Blue	5.5	20	-	16	-	10	-	250	-	465	470	475	30
OSG5DAS3C1A-CRLED16	Pure Green	5.5	20	-	16	-	10	-	500	-	520	525	530	30
OSY5MAS3C1A-CRLED16	Yellow	5	20	-	16	-	10	-	300	-	585	590	595	30
OSR5MAS3C1A-CRLED16	Red	5	20	-	16	-	10	-	300	-	620	625	630	30

*1 Tolerance of measurements of chromaticity coordinate is ±10%

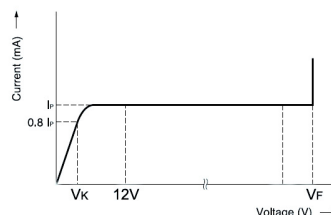
*2 Tolerance of measurements of dominant wavelength is ±1nm

*3 Tolerance of measurements of luminous intensity is ±15%

*4 Tolerance of measurements of forward voltage is ±0.1V

■Applications

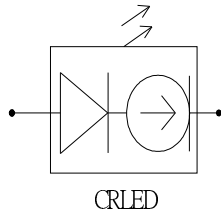
- Electronic Signs And Signals/ Small Area Illuminations
- Back Lighting/ Toys/ Other Lighting



Explanation of terms
I_p Pinch-off current at 12v
V_K Voltage which produces 0.8I_p or greater current
V_F Breakdown voltage

■ Typical Applications

1 : Single LED



2 : Multi- LEDs in series

