

T10 Auto LED

T10 Auto LED which requires a 5050 SMD and a resistor in series to permit direct connection to DC 12V.

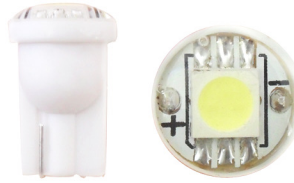
■ Features

- 5050 SMD LED
- DC 12V

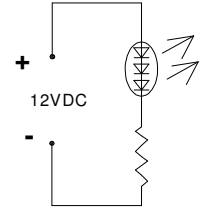
■ Applications

- Bicycle Light / Torch
- Dashboard Signal / Automotive Lighting

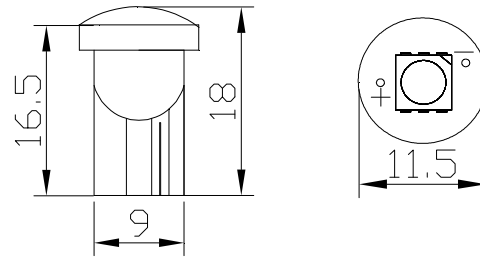
Photo



Circuit Diagram



Outline Dimension



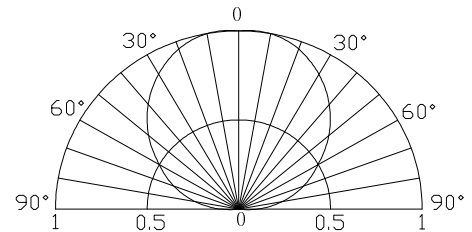
Unit: mm

Tolerance: ±0.50mm

■ Absolute Maximum Rating

(Ta=25°C)

Item	Symbol	Value	Unit
DC Forward Voltage	V _F	14	V
Power Dissipation	P _D	0.42	W
Operating Temperature	Topr	-30 ~ +85	°C
Storage Temperature	Tstg	-40 ~ +100	°C



■ Electrical -Optical Characteristics

(Ta=25°C)

Part Number	Color	Control Voltage DC (V)	Color Temperature	Luminous Intensity*
		Working Current: IF=20mA		
		Typ.	Typ.	Typ.
OST10AB01GD -M543S4C1A	Warm white	12	(2500-3000-3500K)	18lm
OST10AB01GD -W543S4C1A	Cool White	12	(8500-10000-20000K)	18lm
OST10AB01GD -W443S4C1A	Pure White	12	(5500-6500-8500K)	22lm

*1 Tolerance of measurements of chromaticity coordinate is +10%

*2 Tolerance of measurements of luminous intensity is +15%

*3 Tolerance of measurements of forward voltage is ±0.1V