

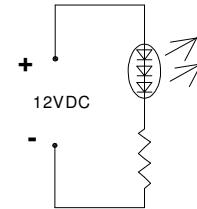
Premium Power T10 Auto LED

Premium Power T10 Auto LED which requires a 3-chip 8mm LED and a resistor in series to permit direct connection to DC 12V.

Photo



Circuit Diagram



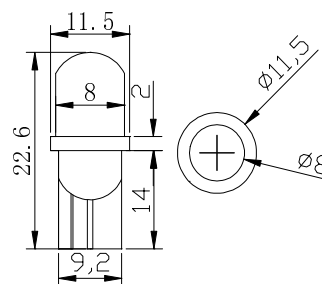
■ Features

- 8mm chip LED
- Water Clear
- DC 12V

■ Applications

- Bicycle Light / Torch
- Dashboard Signal / Automotive Lighting

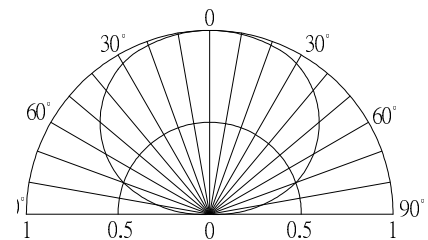
Outline Dimension



Unit:mm

■ Absolute Maximum Rating (Ta=25°C)

Item	Symbol	Value	Unit
DC Forward Voltage	V _F	14	V
Power Dissipation	P _D	0.7	W
Operating Temperature	T _{opr}	-30 ~ +85	°C
Storage Temperature	T _{stg}	-40~ +100	°C



■ Electrical -Optical Characteristics (Ta=25°C)

Part Number	Color	Control Voltage	Domi.	Luminous Intensity*
		DC (V)	Wavelength*	
		Working Current: IF=40mA		
		Typ.	Typ.	Typ.
OST10WG01GD-4WM387E1U	Pure White	12	5500-8000K	55lm
OST10WG01GD-5WM387E1U	Cool White	12	8000-17000K	50lm
OST10WG01GD-5MM387E1U	Warm White	12	2500-3500K	50lm
OST10WG01GD-5YE387E1U	Yellow	12	585-595nm	20 lm
OST10WG01GD-5RE387E1U	Red	12	620-630nm	20 lm
OST10WG01GD-4BM387E1U	Blue	12	455-465nm	12 lm
OST10WG01GD-G58387E1U	Pure Green	12	520-530nm	35 lm
OST10WG01GD-5OG387E1U	Orange	12	600-610nm	35 lm

*1 Tolerance of measurements of chromaticity coordinate is +10%

*2 Tolerance of measurements of luminous intensity is +15%

*3 Tolerance of measurements of forward voltage is ±0.1V

*4 Tolerance of measurements of dominant wavelength is +1nm